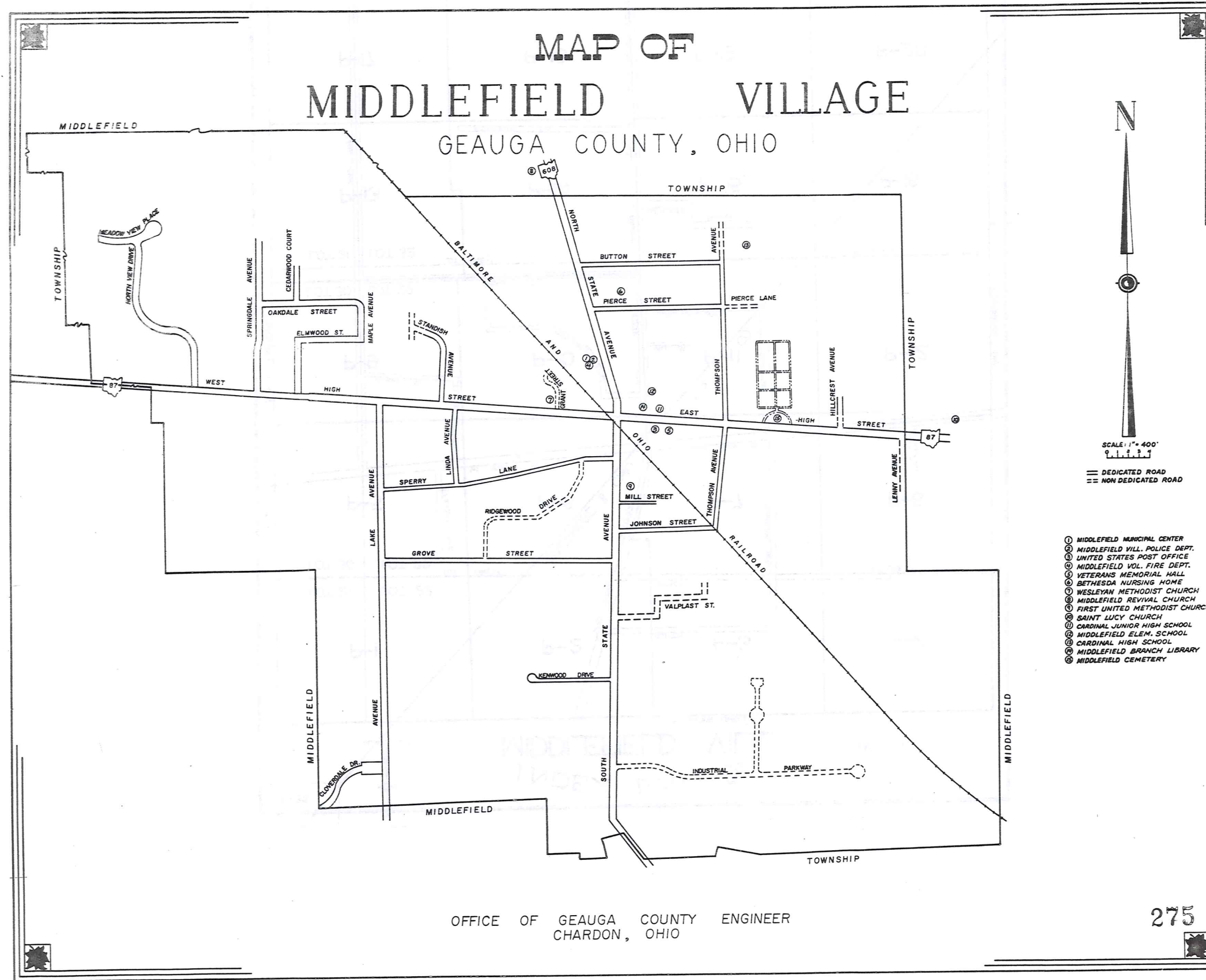
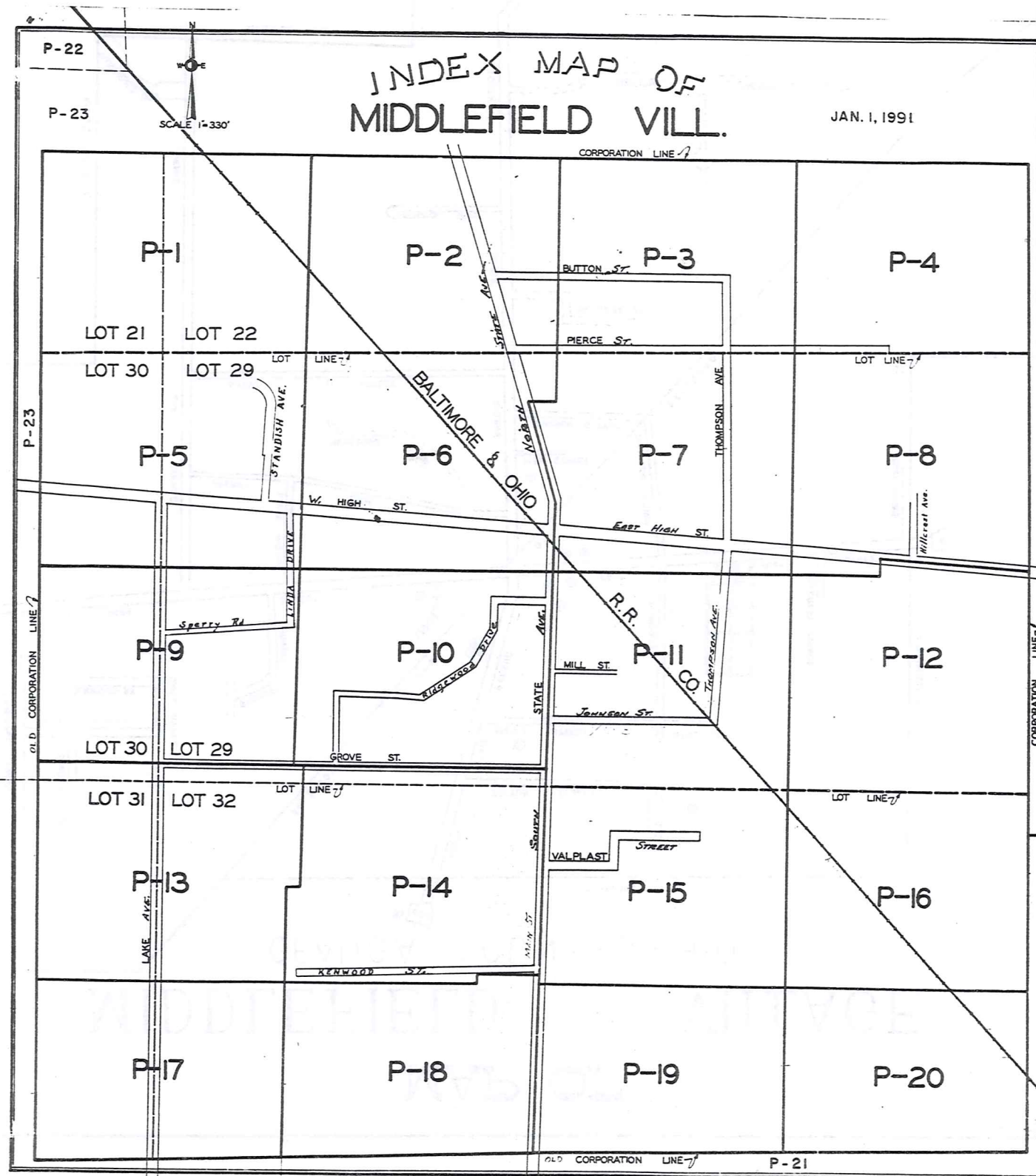


MAP OF MIDDLEFIELD VILLAGE

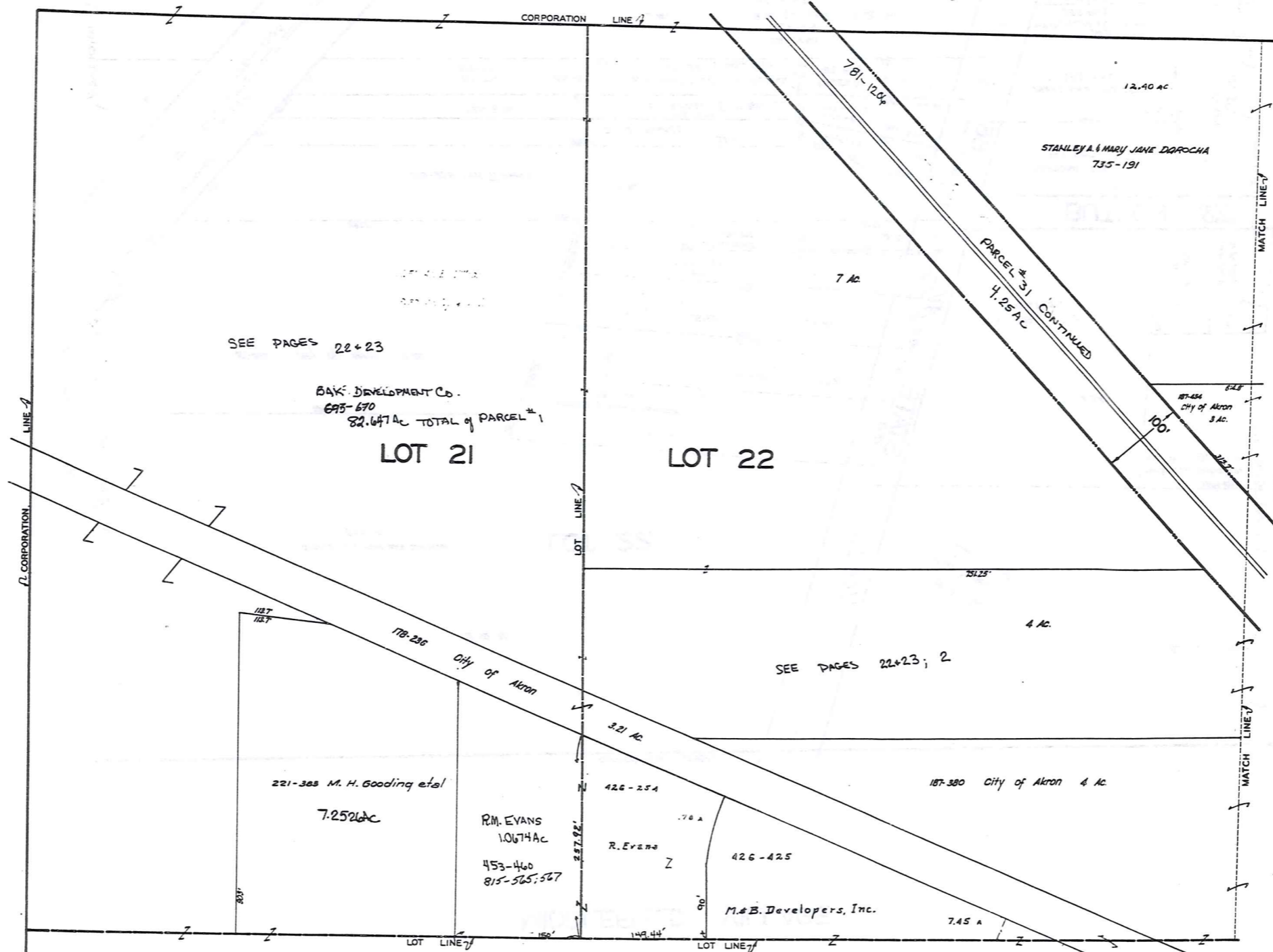
GEAUGA COUNTY, OHIO



- ① MIDDLEFIELD MUNICIPAL CENTER
- ② MIDDLEFIELD VILL. POLICE DEPT.
- ③ UNITED STATES POST OFFICE
- ④ MIDDLEFIELD VOL. FIRE DEPT.
- ⑤ VETERANS MEMORIAL HALL
- ⑥ BETHESDA NURSING HOME
- ⑦ WESLEYAN METHODIST CHURCH
- ⑧ MIDDLEFIELD REVIVAL CHURCH
- ⑨ FIRST UNITED METHODIST CHURCH
- ⑩ SAINT LUCY CHURCH
- ⑪ CARDINAL JUNIOR HIGH SCHOOL
- ⑫ MIDDLEFIELD ELEM. SCHOOL
- ⑬ CARDINAL HIGH SCHOOL
- ⑭ MIDDLEFIELD BRANCH LIBRARY
- ⑮ MIDDLEFIELD CEMETERY



MIDDLEFIELD VILLAGE



SEE PAGES 22+23

BAK DEVELOPMENT CO.
695-670
82.647 AC TOTAL of PARCEL #1

LOT 21

LOT 22

SEE PAGES 22+23; 2

221-368 M. H. Gooding et al
7.2526 ac

R.M. EVANS
106.74 ac
453-460
815-565,567

426-254

R. Evans

426-425

M.B. Developers, Inc.

187-380 City of Akron 4 ac

7.45 ac

12.40 ac

STANLEY A. & MARY JANE DAROCHA
735-191

PARCEL #31 CONTINUED
4.25 ac

106.74 ac
City of Akron
3 ac

MATCH LINE #1

SEE PAGE TWO

MATCH LINE #1



SCALE 1"=66'

JANUARY 1, 1993

SEE PAGE FIVE

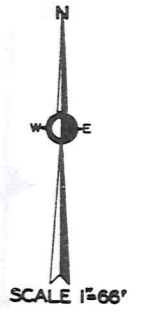
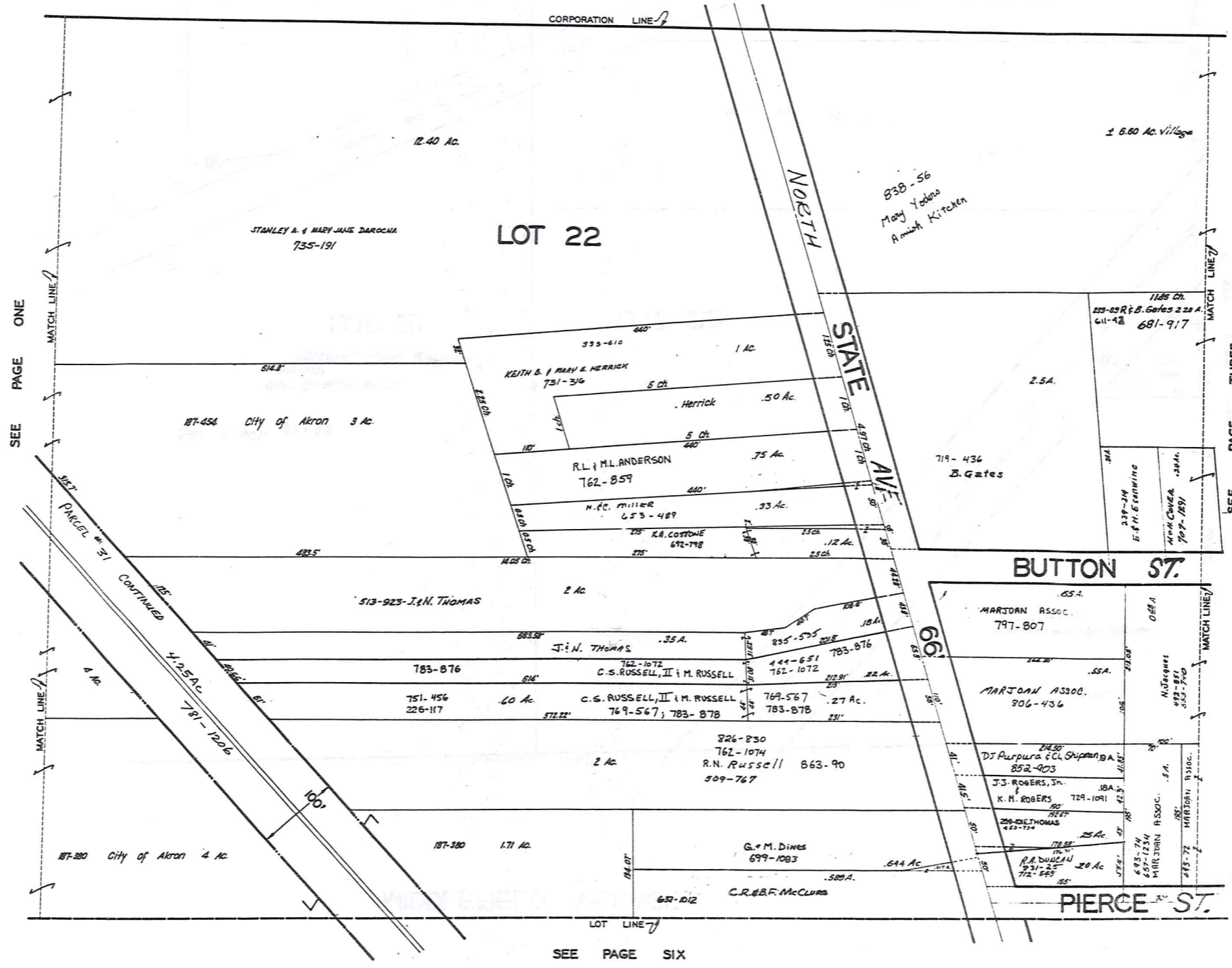
277

RELATIVE REPRESENTATION
MIDDLEFIELD VILLAGE
PG. 1

MIDDLEFIELD VILLAGE

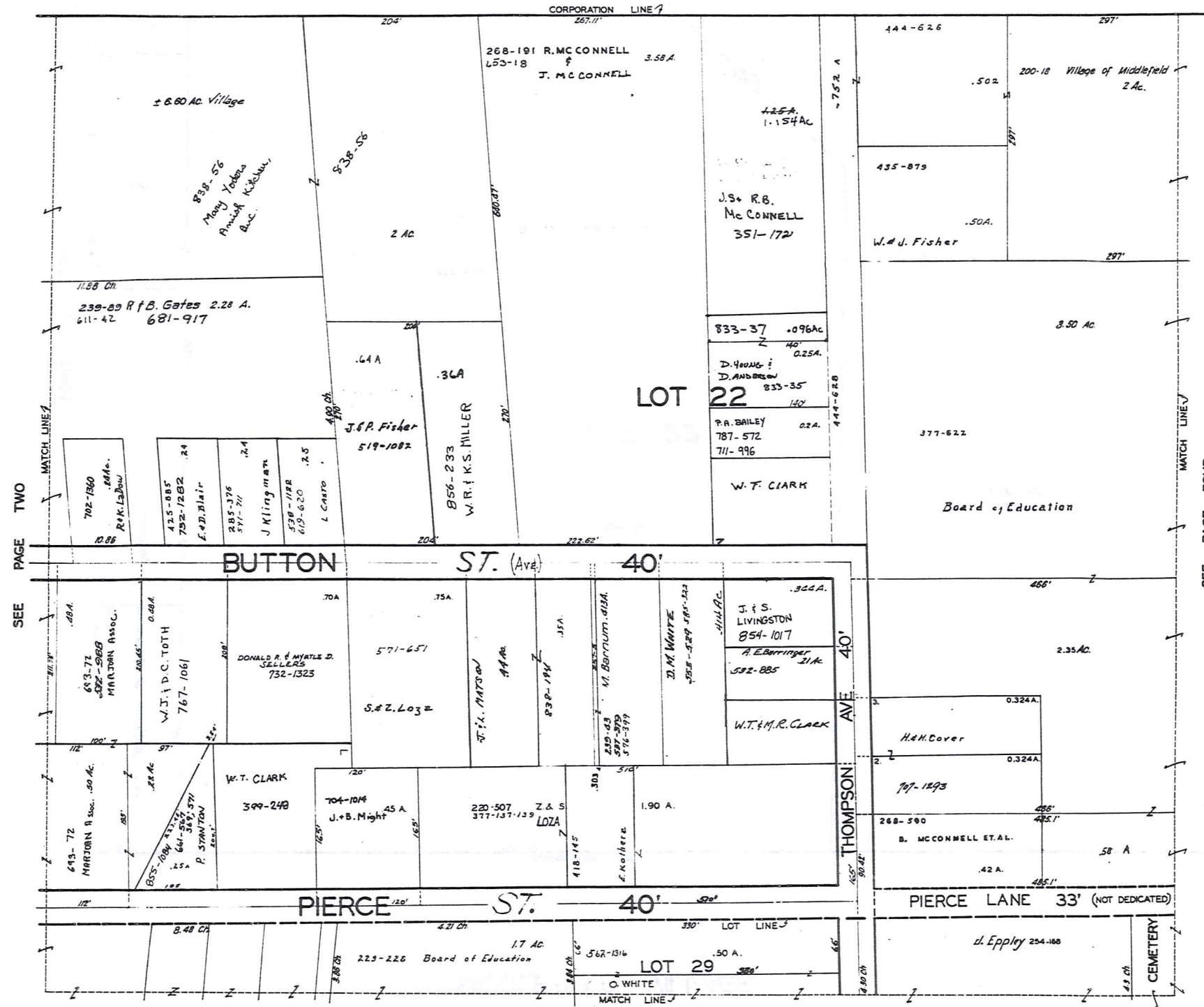
278

PAGE 2



JAN. 1, 1991

MIDDLEFIELD VILLAGE



SEE PAGE TWO

SEE PAGE FOUR

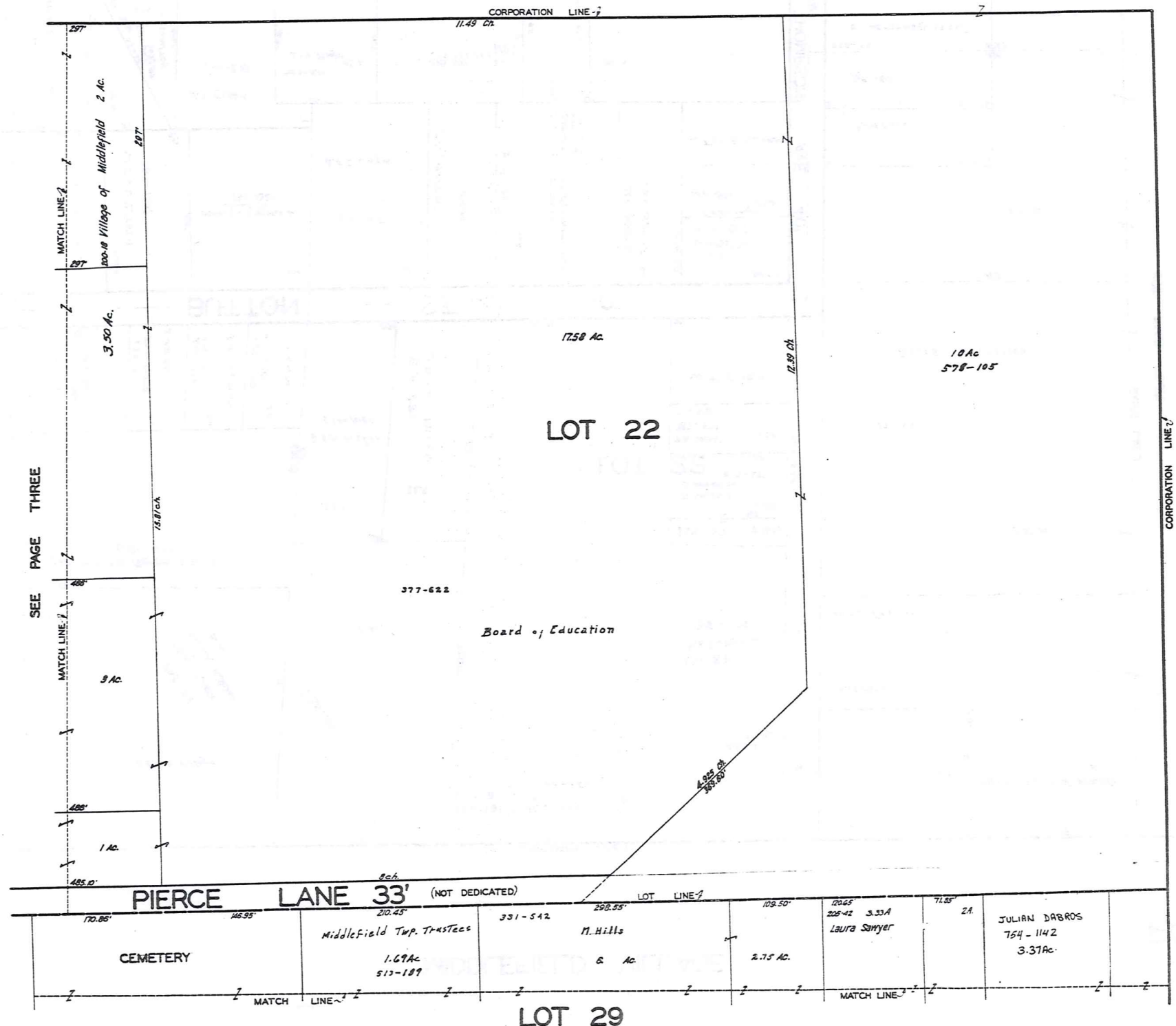
SEE PAGE SEVEN



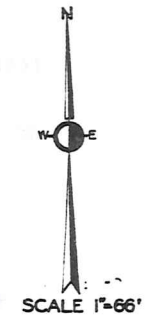
JAN. 1, 1991

279

MIDDLEFIELD VILLAGE



SEE PAGE THREE



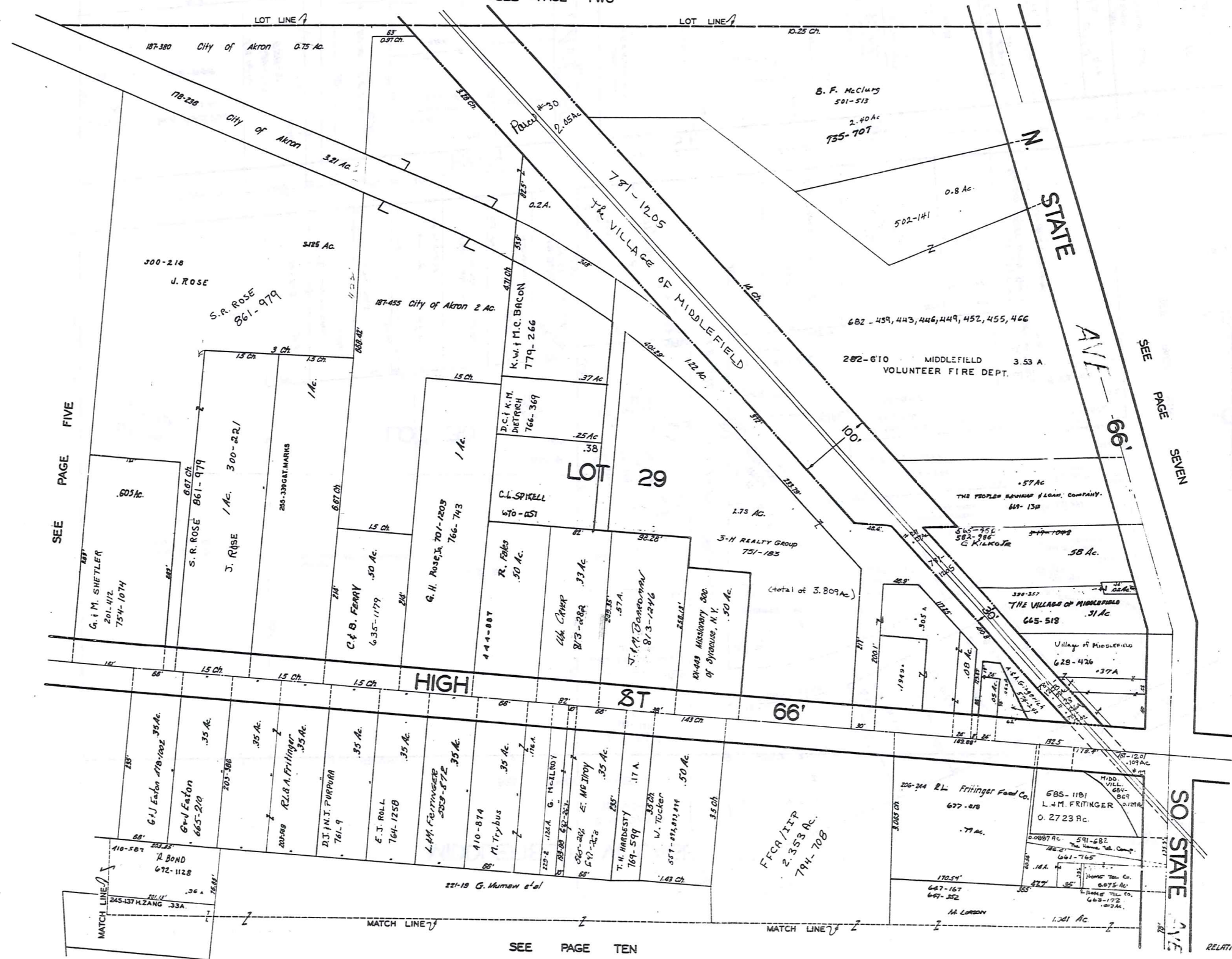
LOT 29

SEE PAGE EIGHT

JANUARY 1, 1991
 RELATIVE REPRESENTATION
 MIDDLEFIELD VILLAGE
 PG. 4

MIDDLEFIELD VILLAGE

SEE PAGE TWO



SEE PAGE FIVE

SEE PAGE SEVEN

SEE PAGE TEN



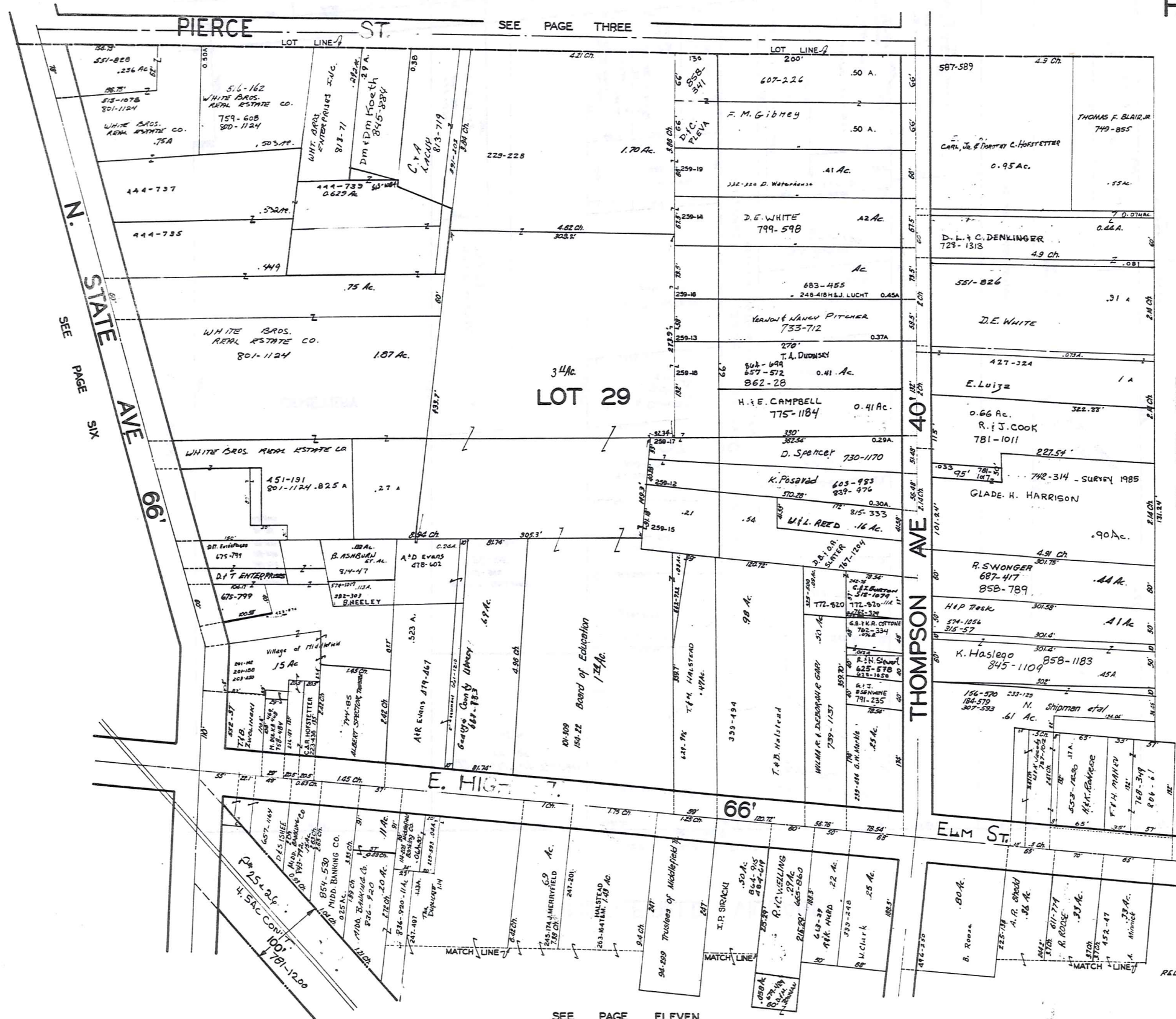
SCALE 1"=66'

JAN. 1, 1991

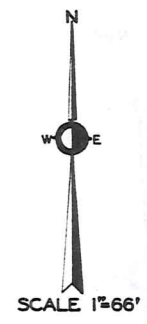
SO STATE AVE 66'

RELATIVE REPRESENTATION
MIDDLEFIELD VILLAGE
PG. 6

MIDDLEFIELD VILLAGE



SEE PAGE EIGHT



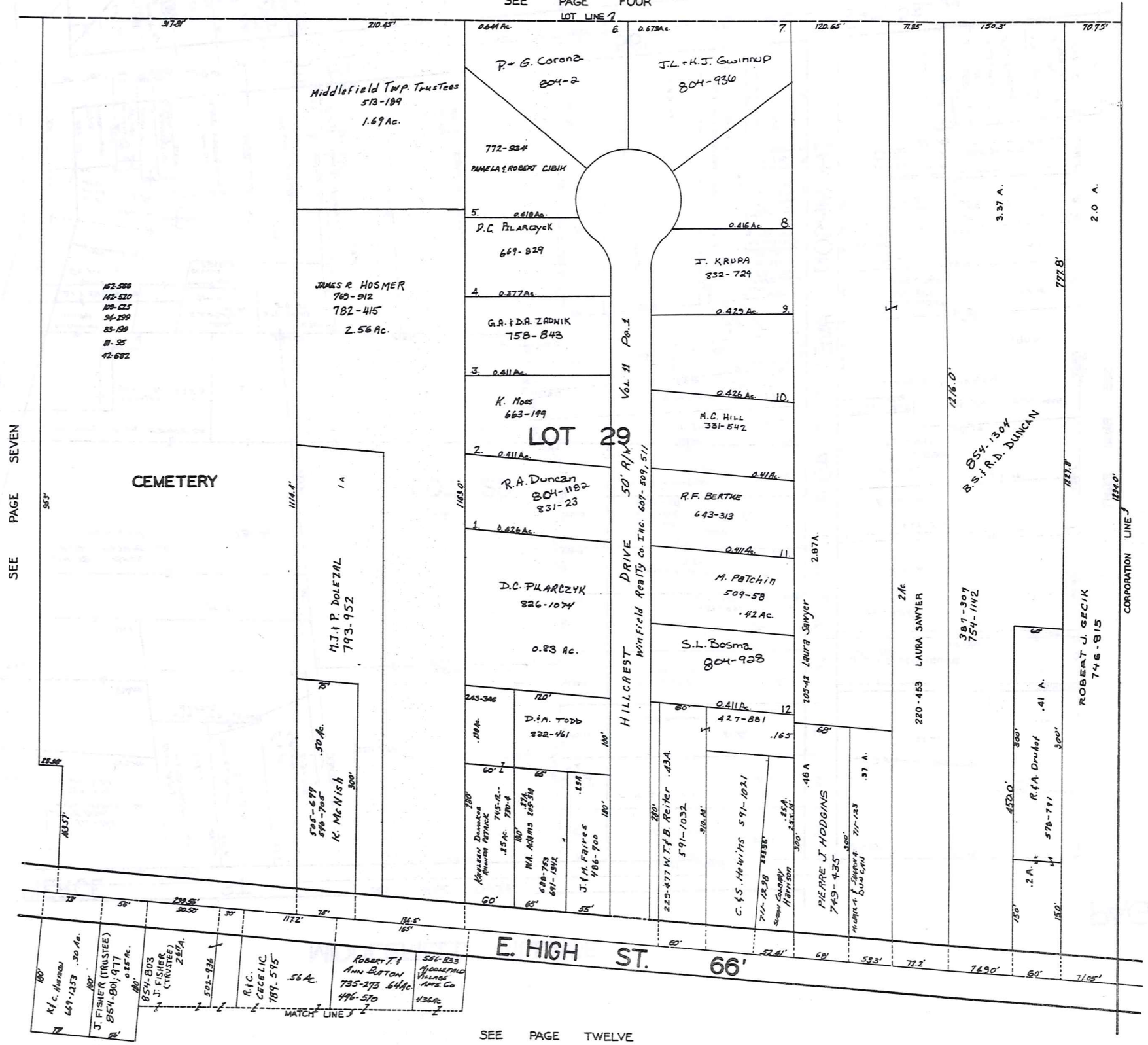
283

JANUARY 1, 1991
 RELATIVE REPRESENTATION
 MIDDLEFIELD VILLAGE
 PG. 7

SEE PAGE ELEVEN

MIDDLEFIELD VILLAGE

SEE PAGE FOUR



SEE PAGE SEVEN



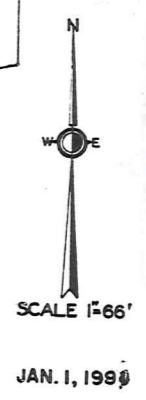
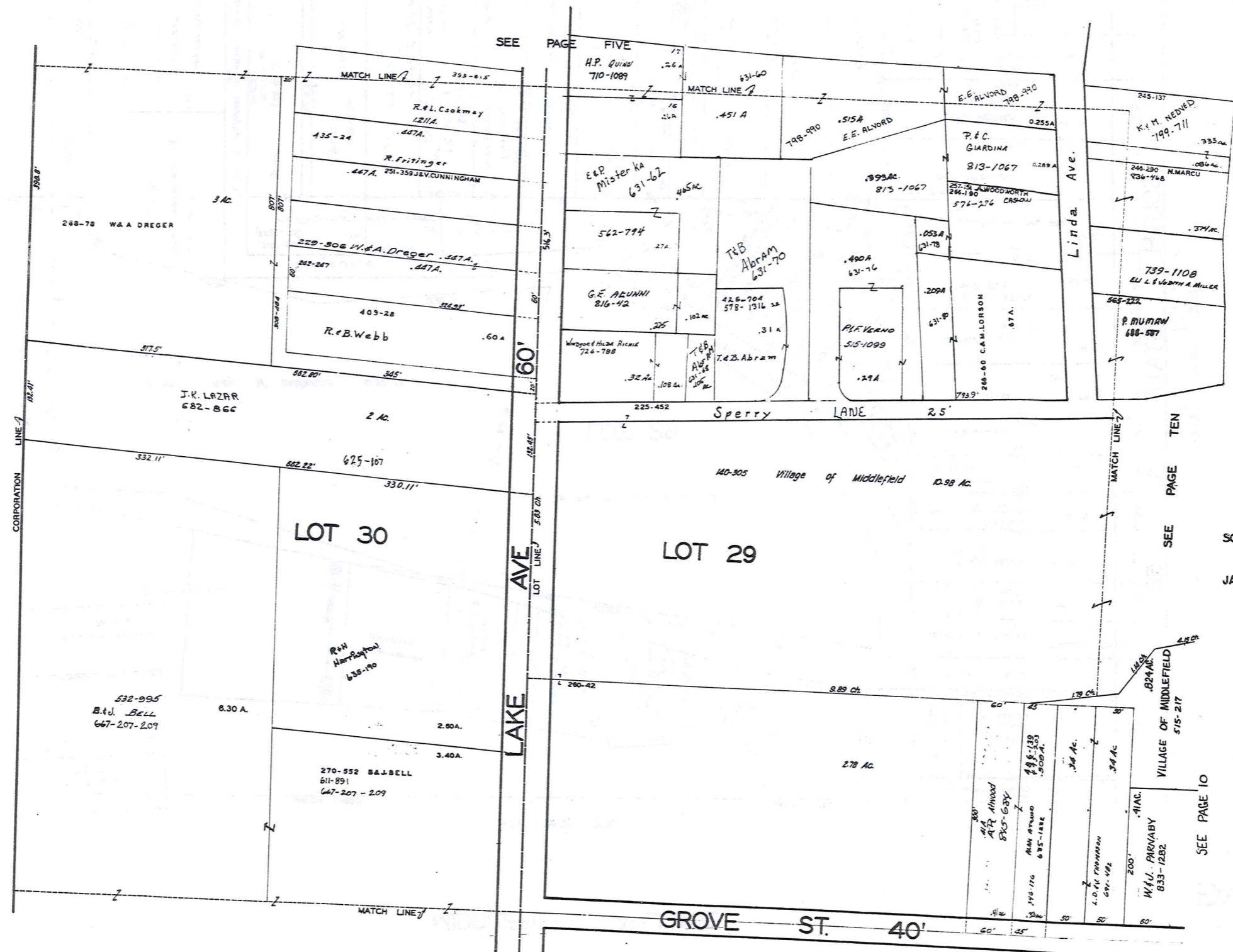
SCALE 1"=66'

JAN. 1, 1991

SEE PAGE TWELVE

RELATIVE REPRESENTATION
MIDDLEFIELD VILLAGE
PG. 8

MIDDLEFIELD VILLAGE



JAN. 1, 1999

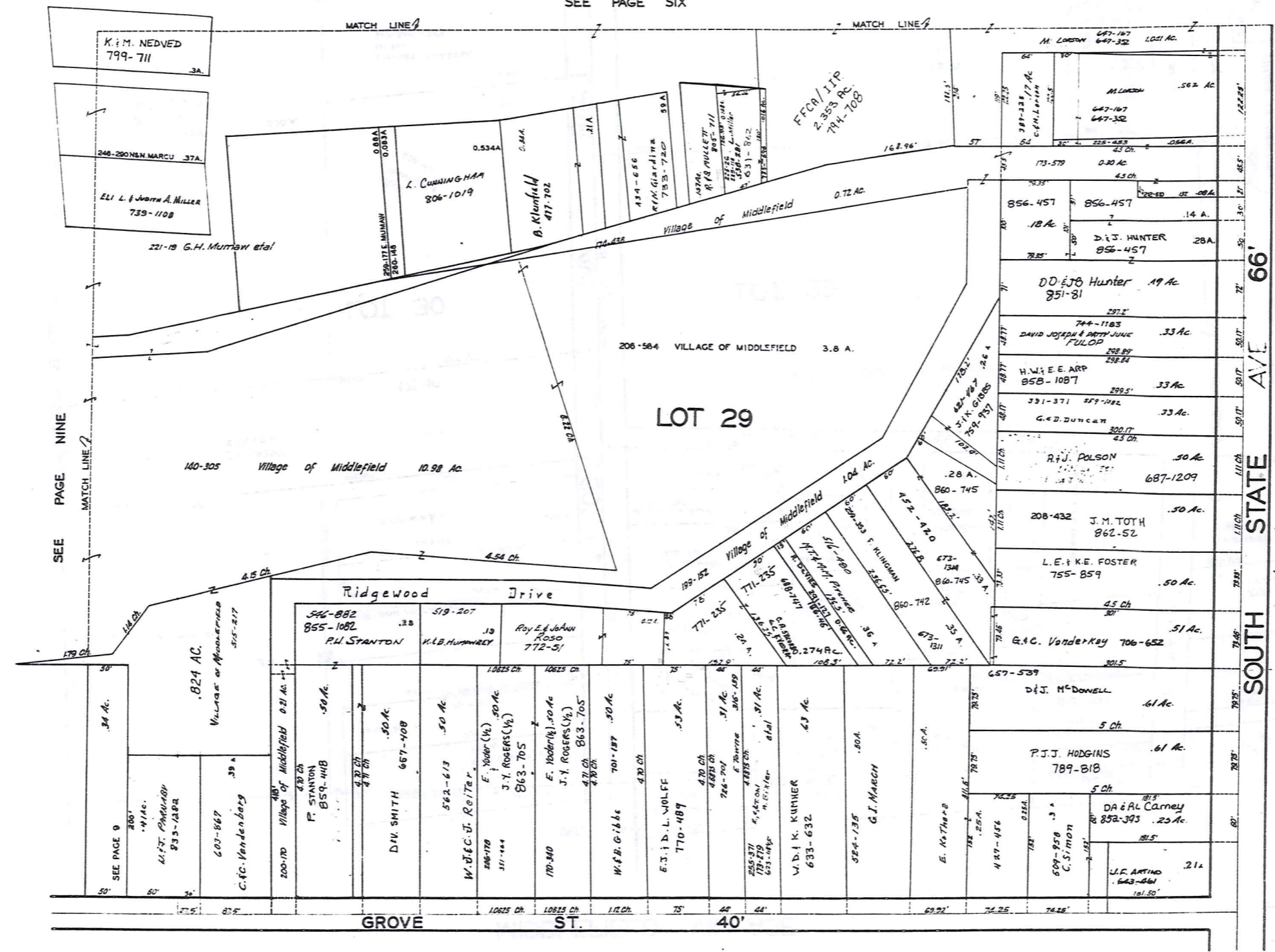
SEE PAGE THIRTEEN

SEE PAGE TEN

285
 RELATIVE REPRESENTATION
 MIDDLEFIELD VILLAGE
 PG. 9

MIDDLEFIELD VILLAGE

SEE PAGE SIX



SEE PAGE NINE

SEE PAGE ELEVEN

SEE PAGE FOURTEEN

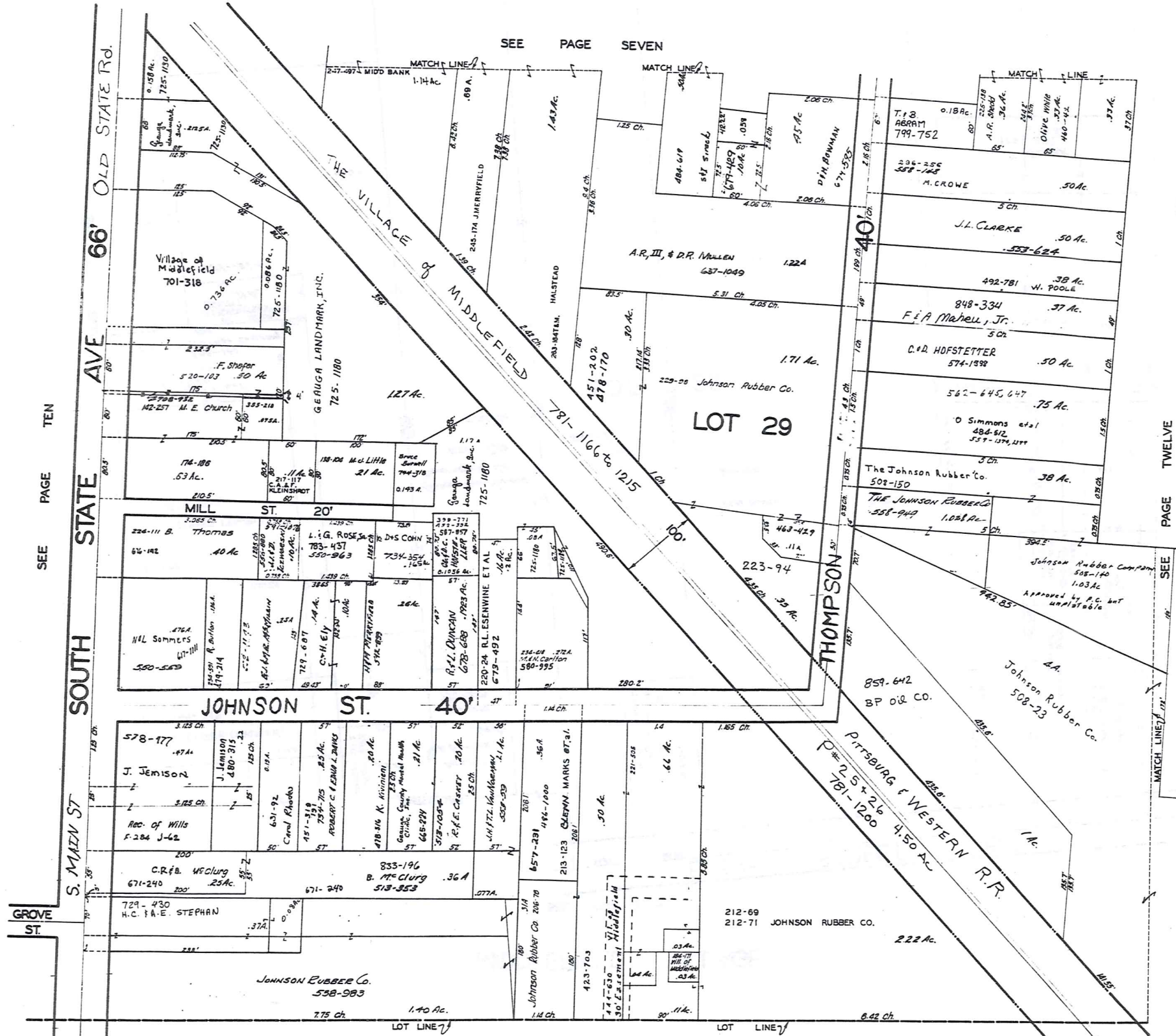


SCALE 1"=66'

JAN. 1, 1991

RELATIVE REPRESENTATION

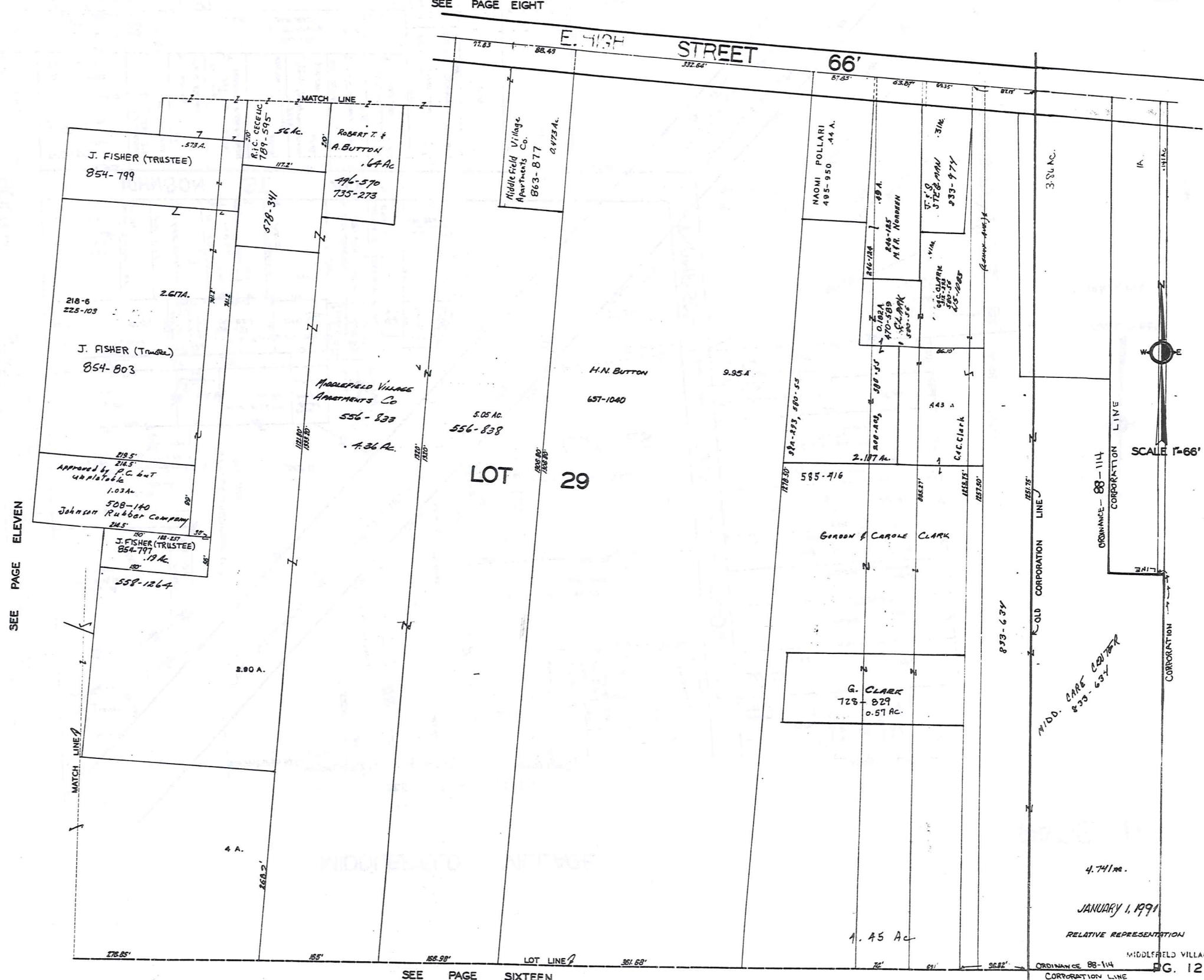
MIDDLEFIELD VILLAGE



SCALE 1" = 66'
 JAN. 1, 1991

MIDDLEFIELD VILLAGE

SEE PAGE EIGHT



SEE PAGE ELEVEN

SEE PAGE SIXTEEN

SCALE 1"=66'

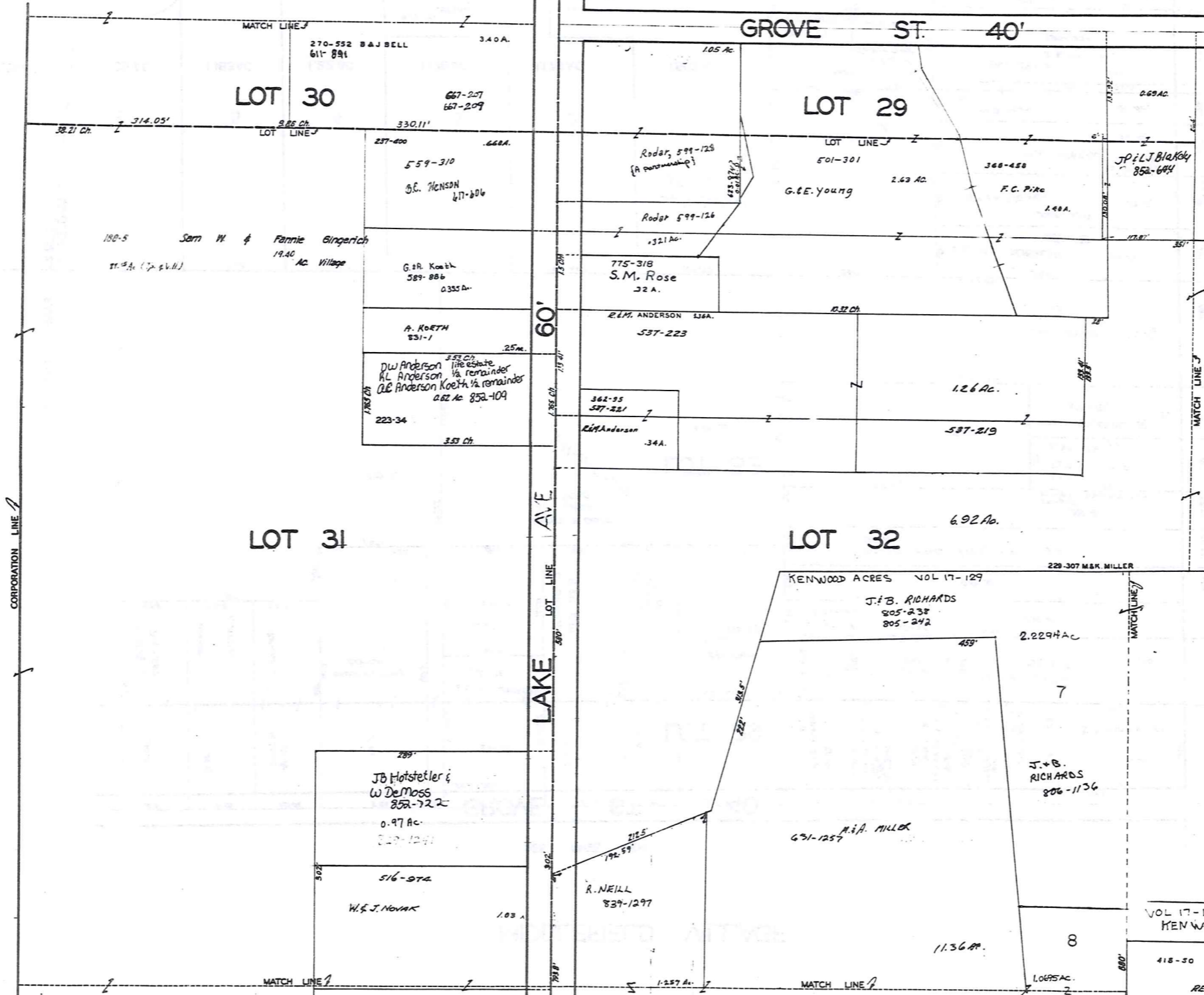
MIDD. CARP CENTER
853-657

4.741 AC.
JANUARY 1, 1991

RELATIVE REPRESENTATION
MIDDLEFIELD VILLAGE
ORDINANCE 88-114
CORPORATION LINE
PG. 12

MIDDLEFIELD VILLAGE

SEE PAGE NINE



SEE PAGE FOURTEEN

SEE PAGE SEVENTEEN

VOL 17-129-130
KENWOOD ACRES SUB.

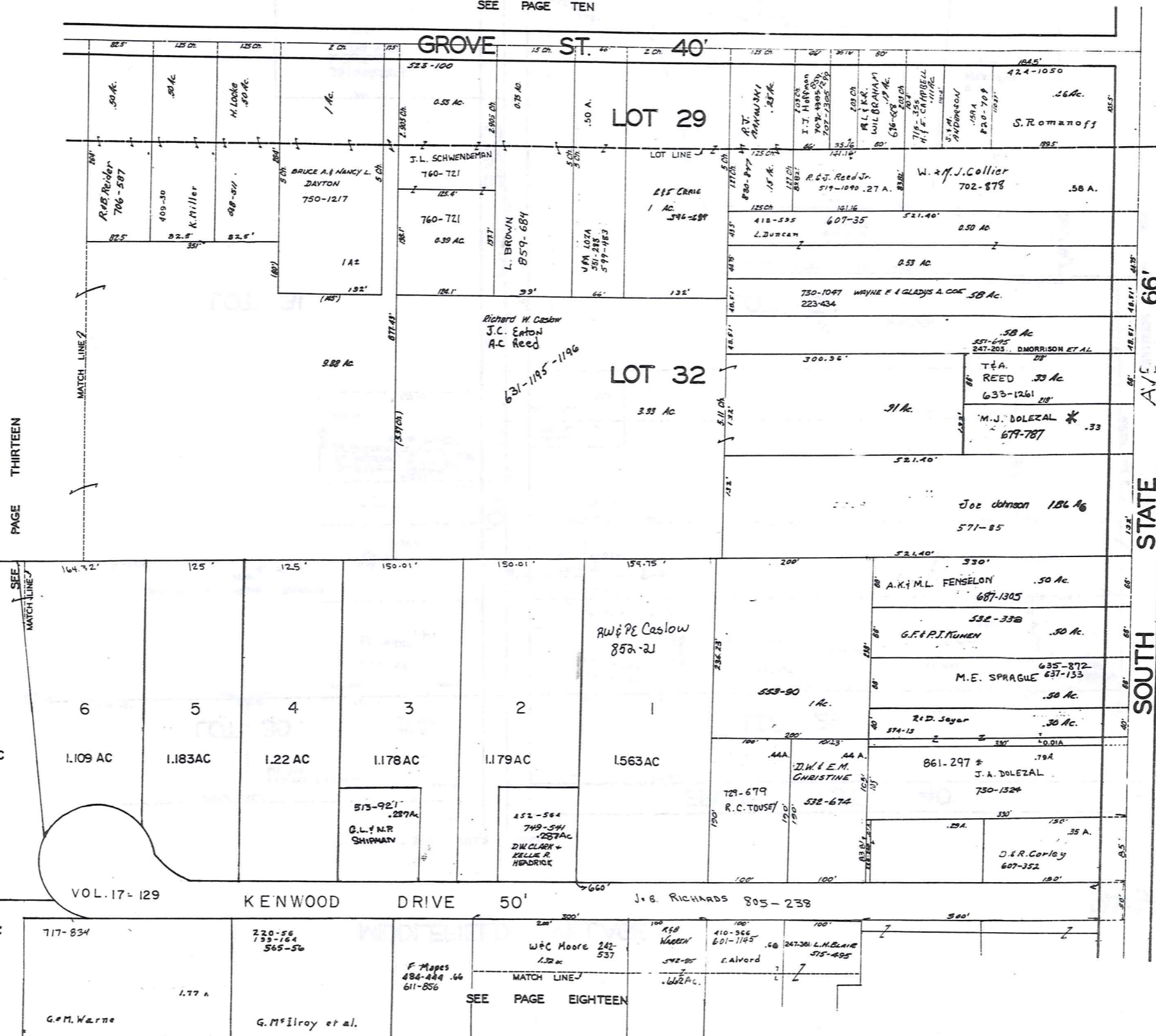
418-50 **289**

RELATIVE REPRESENTATION

MIDDLEFIELD VILLAGE
G. & M. WARNE
PG. 13
177 A

MIDDLEFIELD VILLAGE

SEE PAGE TEN



PAGE THIRTEEN

SEE PAGE FIFTEEN



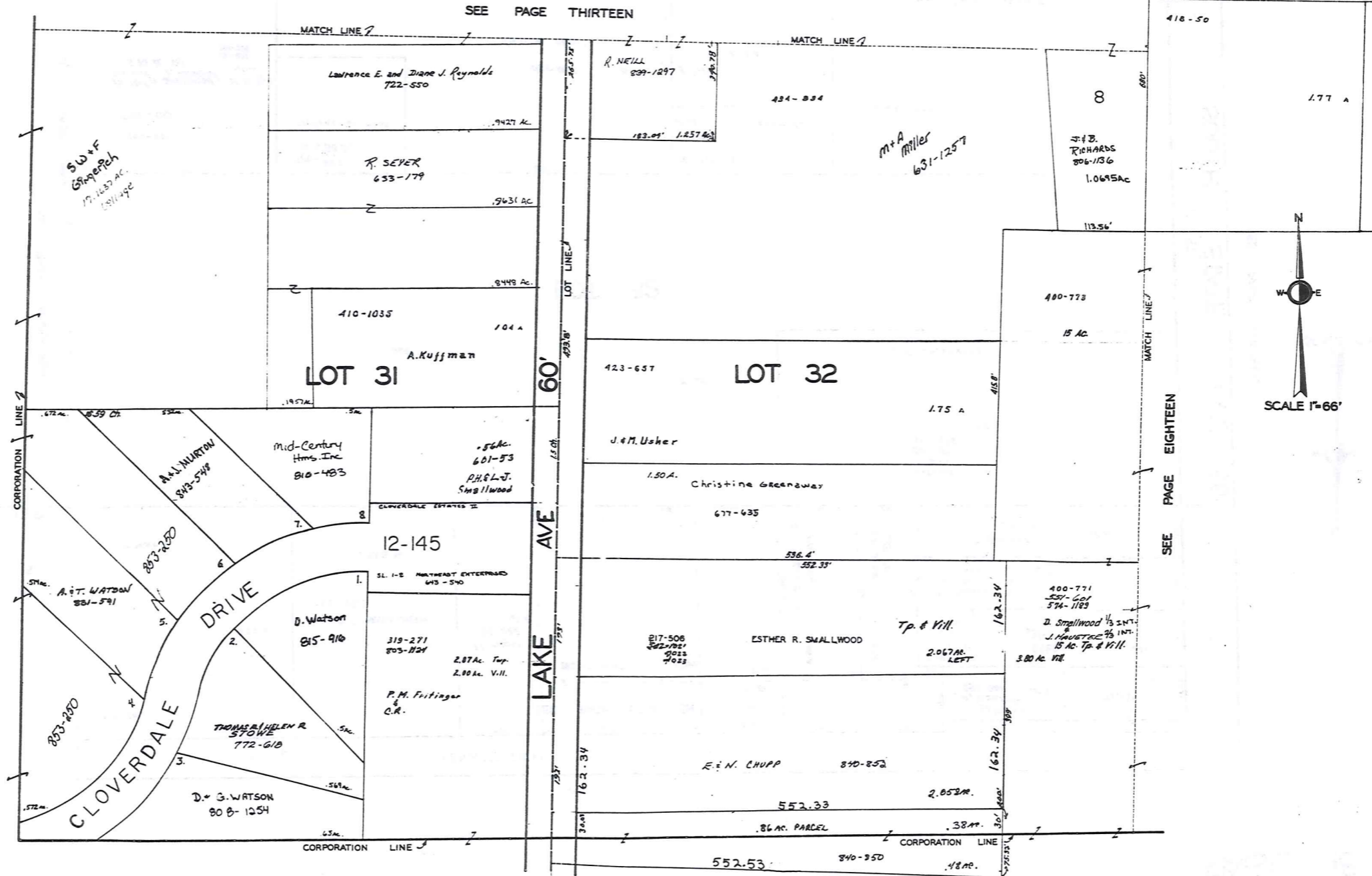
JAN. 1, 1991

**PAGE “15” MISSING IN
ORIGINAL BOOK**

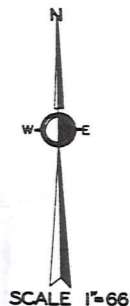
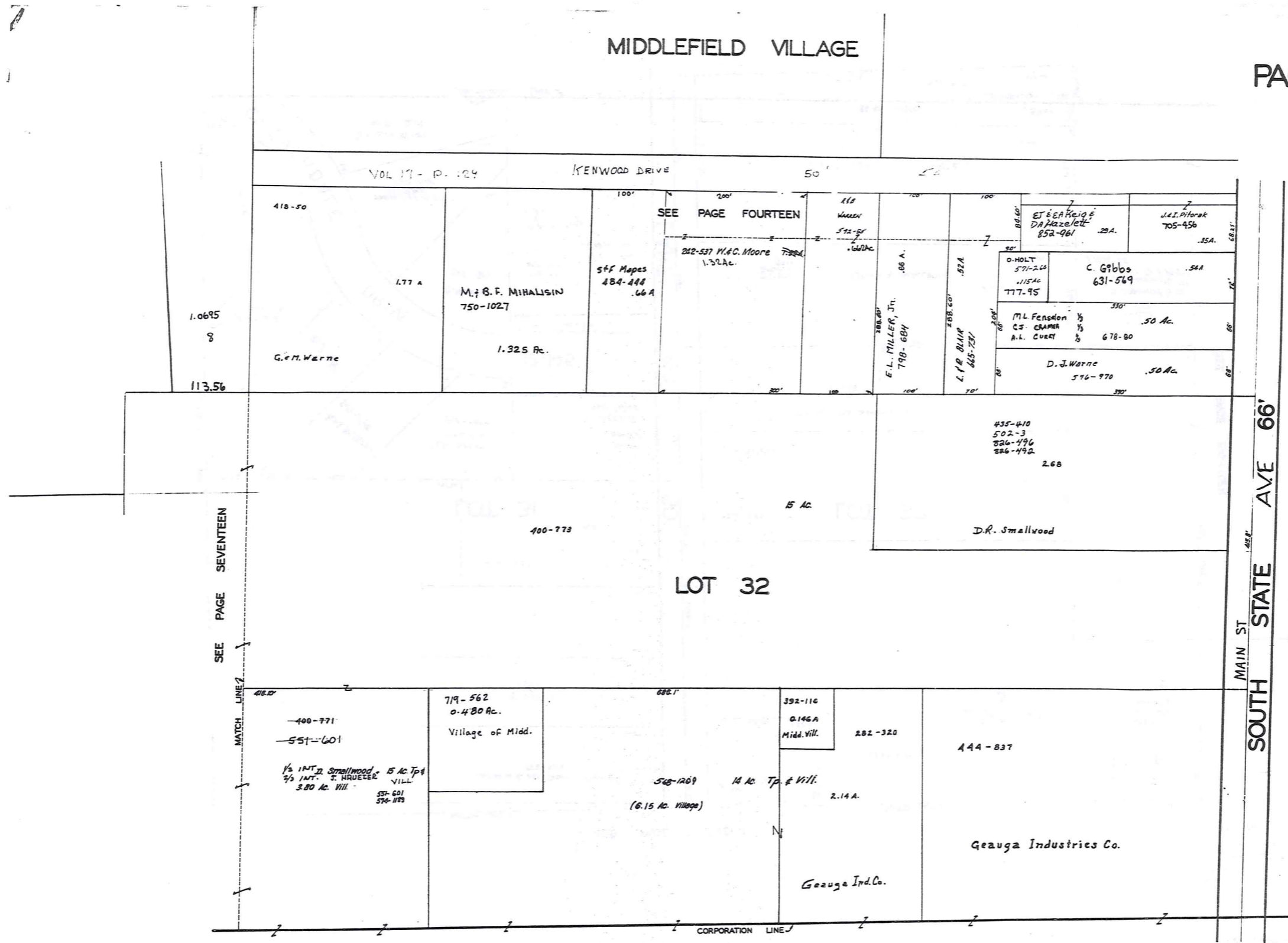
**PAGE “16” MISSING IN
ORIGINAL BOOK**

MIDDLEFIELD VILLAGE

VOL 17-129
KENWOOD ACRES SUB.



MIDDLEFIELD VILLAGE



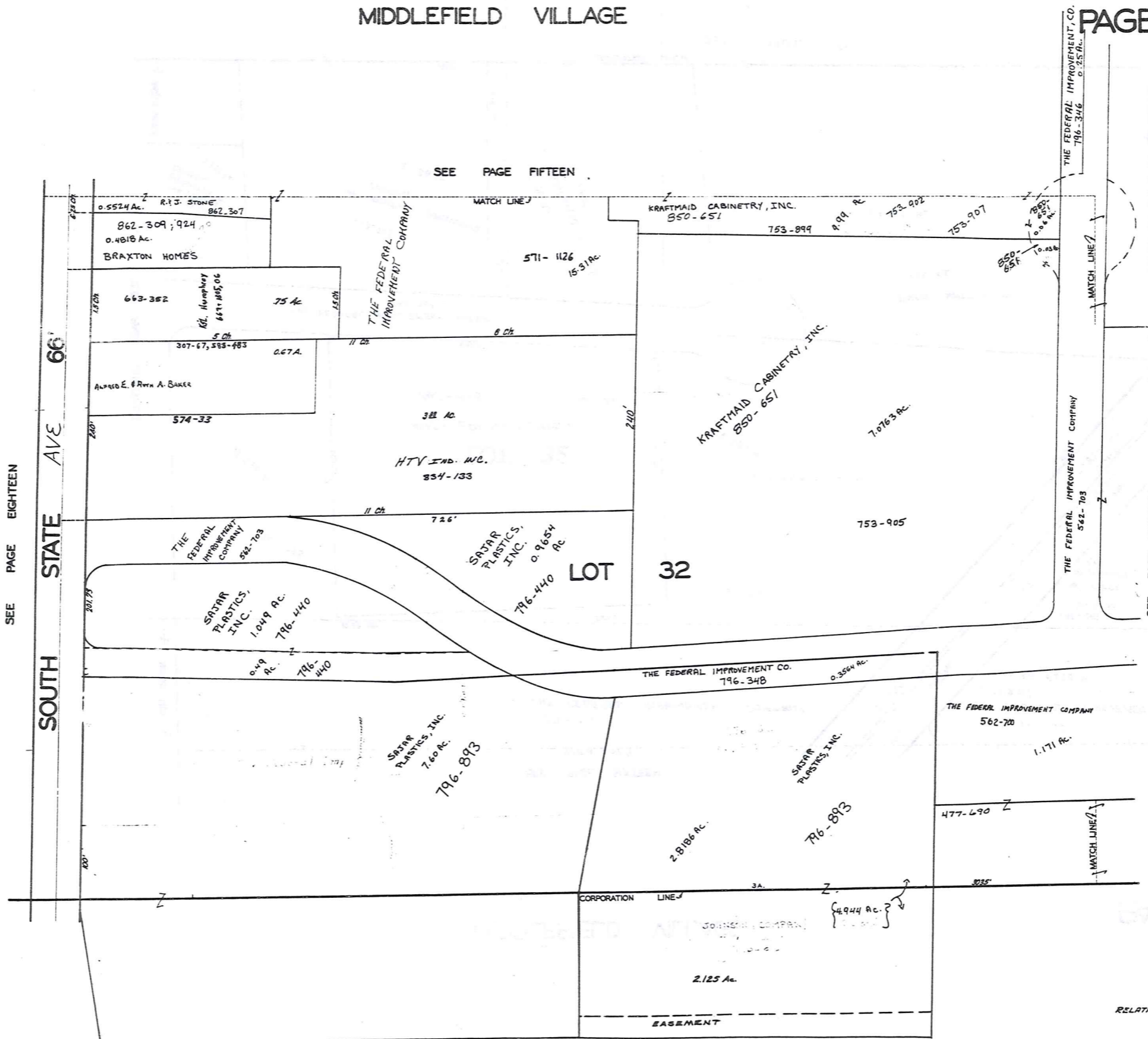
SEE PAGE NINETEEN

SEE PAGE SEVENTEEN

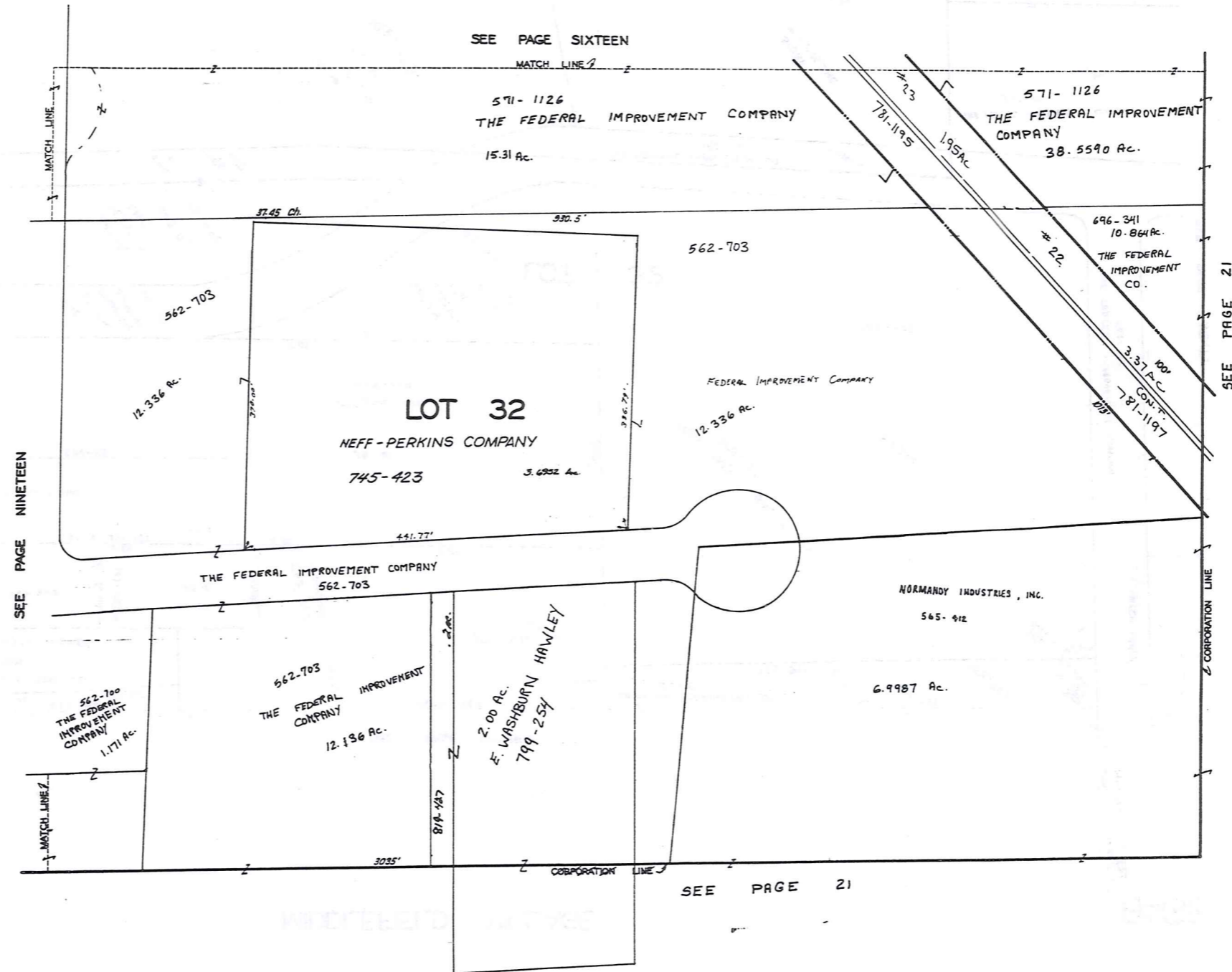
MAIN ST SOUTH STATE AVE 66'

MIDDLEFIELD VILLAGE

SEE PAGE FIFTEEN



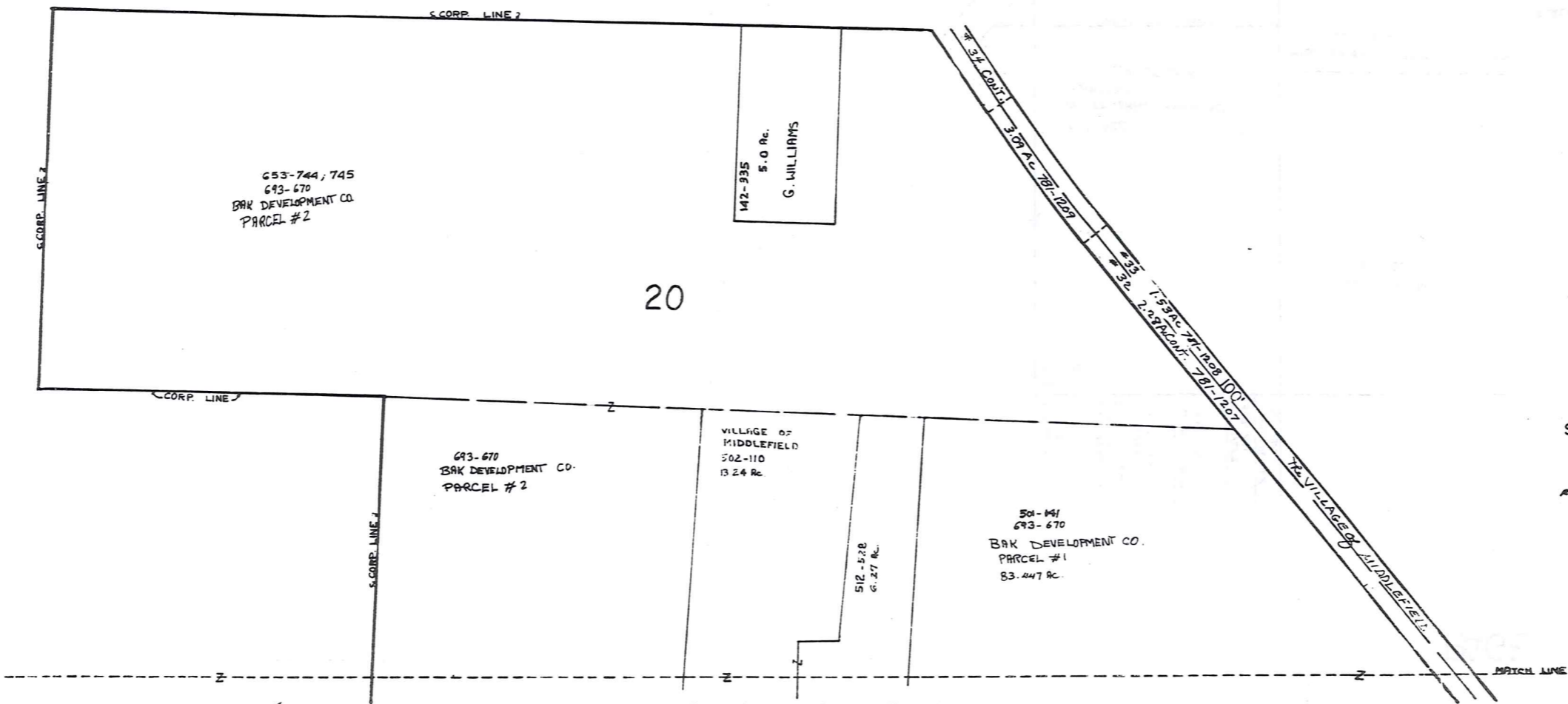
MIDDLEFIELD VILLAGE



JAN 1, 1991

ART VGE
WOODFIELD

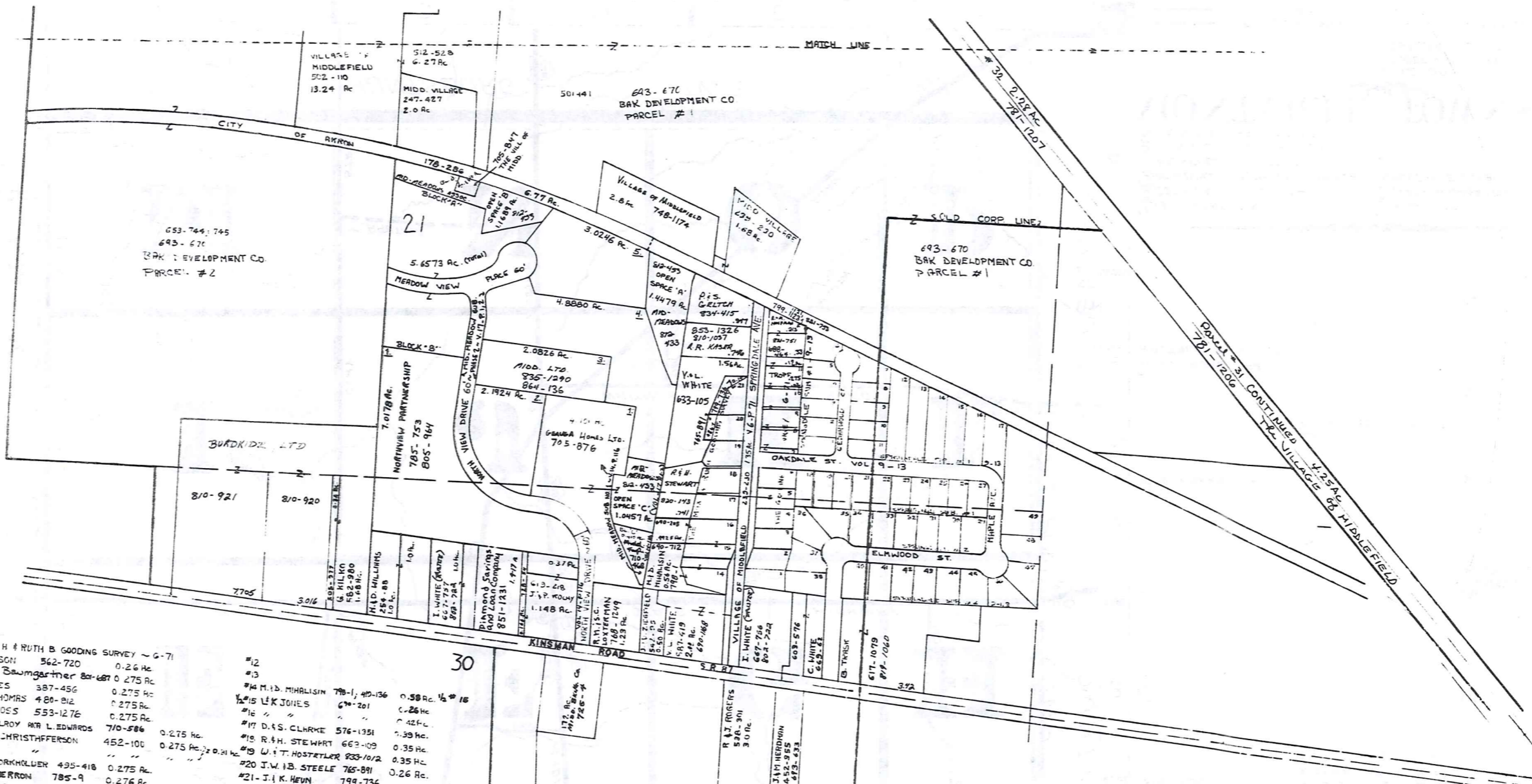
W. WALDEN



SCALE 1"=200'

JAN. 1, 1991

RELATIVE REPRESENTATION



- THE MAX H & RUTH B GOODING SURVEY - G-71
- #1 N. NELSON 562-720 0.26 Ac.
 - #2 R. D. Baumgartner 80-607 0.275 Ac.
 - #3 F. PALES 387-456 0.275 Ac.
 - #4 S. L. THOMAS 480-812 0.275 Ac.
 - #5 T. R. MOSS 553-1276 0.275 Ac.
 - #6 L. McLEROY AND L. EDWARDS 710-586 0.275 Ac.
 - #7 R. E. CHRISTOFFERSON 452-100 0.275 Ac.
 - #8 J. M. BORKHOLDER 495-418 0.275 Ac.
 - #9 K. J. HERRON 785-9 0.276 Ac.
 - #10 G. J. TROFF 495-250 0.275 Ac.

- #11 G. J. TROFF 495-250 0.275 Ac.
- #12
- #13
- #14 M. B. MIHALISIN 78-1, 410-136 0.58 Ac. 1/2 # 16
- #15 L. K. JONES 670-201 0.26 Ac.
- #16 " " " " " " " " " " " "
- #17 D. S. CLARKE 576-1351 0.42 Ac.
- #18 R. H. STEWART 663-109 0.35 Ac.
- #19 W. T. HOSTETLER 833-1072 0.35 Ac.
- #20 J. W. B. STEELE 765-891 0.26 Ac.
- #21 J. I. K. HEVN 799-736 0.23 Ac.
- #22 R. L. KASER 524-33 0.37 Ac.

- SPRINGDALE SUBDIVISION NO. 1 & NO. 2
- #1 D. M. FALTON 785-121 0.247 Ac.
 - #2 K. OULLEN 550-892 0.23 Ac.
 - #3 P. WISEMAN 795-31, 537-644 0.25 Ac.
 - #4 S. M. KOZAKO 809-225 0.25 Ac.
 - #5 G. W. & B. J. WILKES 537-633 0.235 Ac.
 - #6 C. W. LANGHAM 562-906 0.293 Ac.
 - #7 A. J. SATERLEE 815-442 0.247 Ac.
 - #8 G. FULOP 780-739 0.282 Ac.
 - #9 R. D. BARCINOWSKI 537-924 0.250 Ac.
 - #10 G. J. & J. TROFF 734-280 0.05 Ac.
 - #11 R. E. STEWART 533-782 0.247 Ac.
 - #12 E. E. SELBY 484-600 0.580 Ac.
 - #13 M. E. BRILLA et al. 485-54 0.524 Ac.
 - #14 W. B. OSMOND 576-1033 0.468 Ac.

- #15 W. B. OSMOND 576-1032 0.412 Ac.
- #16 M. MALLISKI 791-650 0.356 Ac. ; 857-887
- #17 R. DeMARCO 493-126 0.373 Ac.
- #18 D. C. Hersh 810-243 0.237 Ac.
- #19 R. J. & M. DETWEILER 582-226 0.250 Ac.
- #20 " " " " " " " " " " " "
- #21 E. C. Ziegler 702-551 0.250 Ac.
- #22 J. D. SMITH 617-728 0.250 Ac.
- #23 L. G. & L. EIERMANN 593-903 0.250 Ac.
- #24 B. R. HATCH 713-222 0.250 Ac.
- #25 E. M. COX 855-519 0.250 Ac.
- #26 M. FREHENSE 537-1097 0.237 Ac.
- #27 J. L. & V. MILLER 537-872 0.249 Ac.

- #29 G. H. BURRIS 657-893 0.332 Ac.
- #30 Nancy L. SWANSON 728-644 0.283 Ac.
- #31 R. J. WEINICK 813-1031 0.283 Ac.
- #32 T. L. & V. McENENY 551-201 0.283 Ac.
- #33 W. H. BLUE 591-1090 0.283 Ac.
- #34 R. D. KLEPPER 593-724 0.282 Ac.
- #35 K. E. FERRY 551-256 0.335 Ac.
- #36 B. MAZZONE 551-181 0.362 Ac.
- #37 D. M. MARES 775-1109 0.333 Ac.
- #38 R. S. PETRICK 661-337 0.333 Ac.

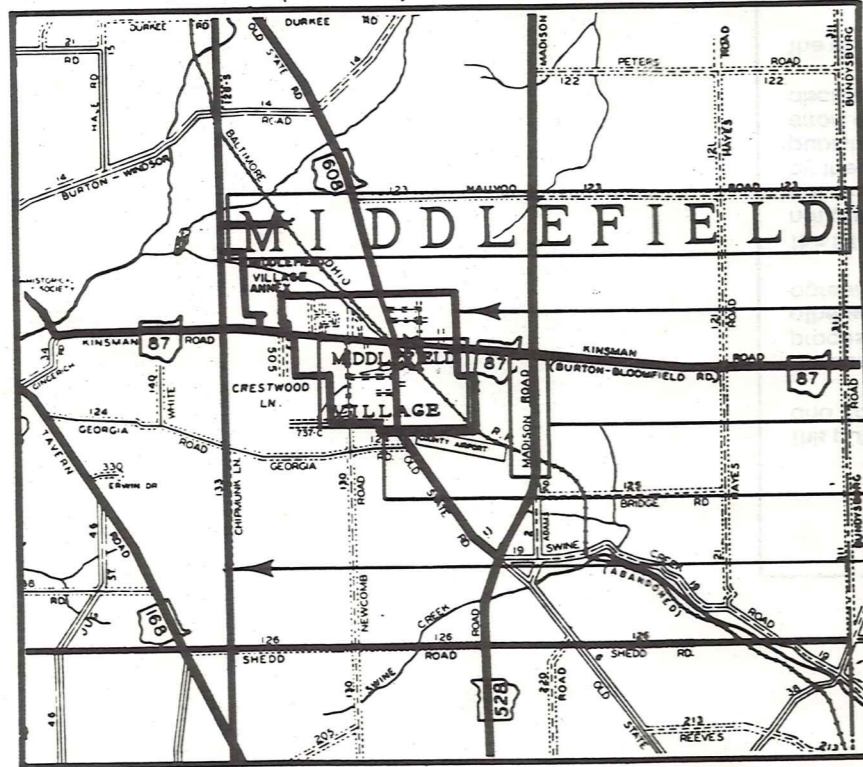
- #30
- #31 W. F. & L. M. CONTEKORY 602-913 0.333 Ac.
- #32 J. BRUCE 663-711 0.281 Ac.
- #33 T. P. AKERS 839-457 0.280 Ac.
- #34 C. J. BRIGHAM 551-574 0.279 Ac.
- #35 R. W. & L. W. MATH. COM. 617-541 0.297 Ac.
- #36 M. D. ROACH 856-447 0.282 Ac.
- #37 J. W. H. M. BLASUS 551-540 0.250 Ac.
- #38 R. R. & A. BRAUN 556-1077 0.357 Ac.
- #39 J. M. WILSON 831-819 0.335 Ac.
- #40 W. J. SLY 766-771 0.332 Ac.

SCALE 1" = 200'
 JAN. 1, 1991
 RELATIVE REPRESENTATION

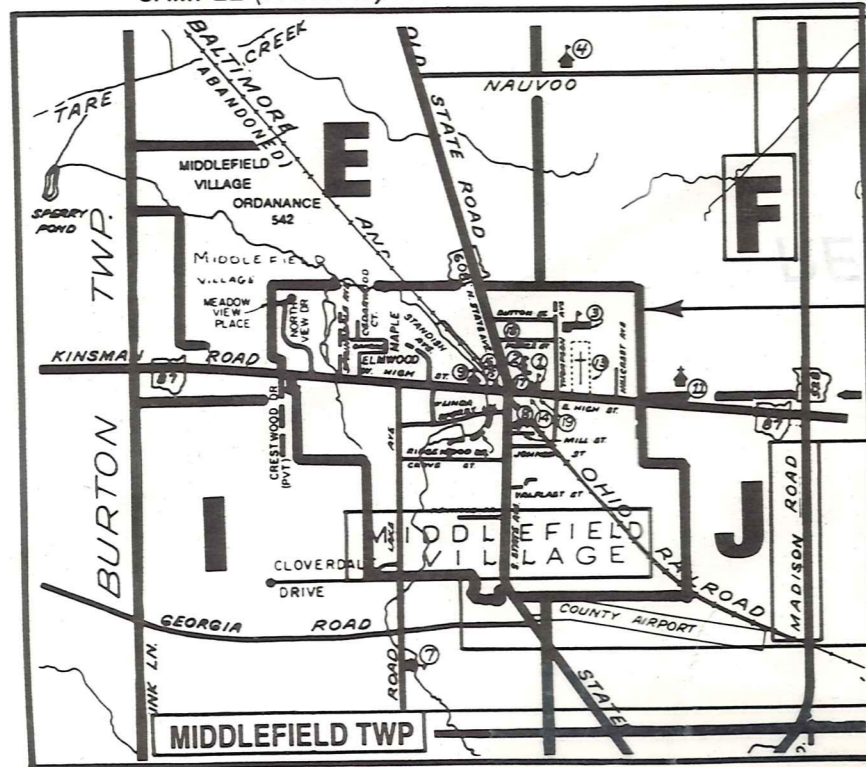
Explanation and Use Sheet for Geauga County, Ohio

A

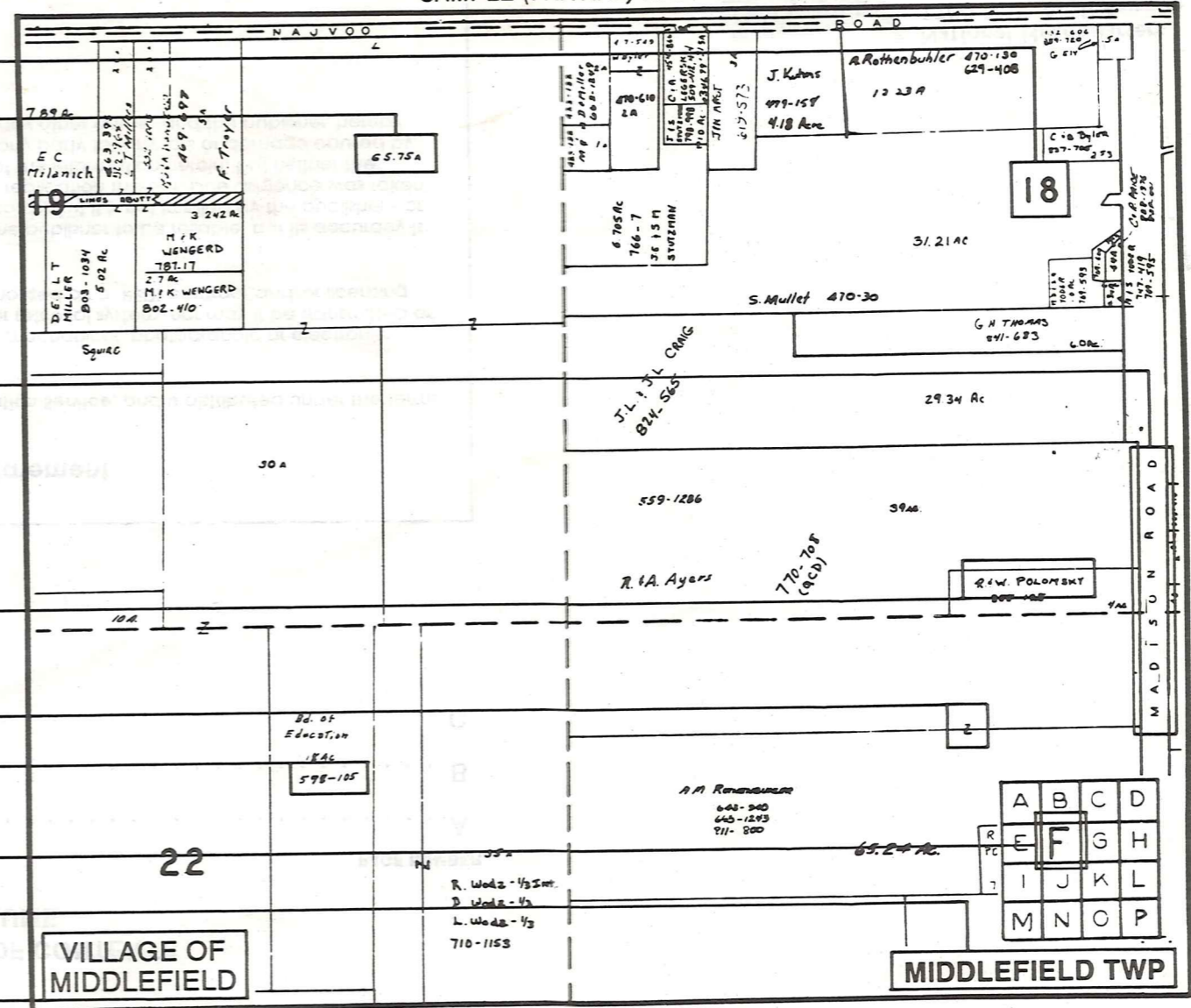
SAMPLE (PARTIAL) COUNTY INDEX MAP



SAMPLE (PARTIAL) MUNICIPALITY INDEX MAP



SAMPLE (PARTIAL) MAP PAGE



- Tract Lot Number
- Acreage
- Township Name
- Village Boundary
- Street Name
- Village Name
- Township Boundary
- Owners Name
- Denotes Continuous Ownership
- Deed Book & Page
- Map Page Number
- Township Name
- Village Name

- Village Boundary
- Street Name
- Village Name
- Township Name

USE OF THE MAP VOLUME

1. LOCATE THE GENERAL AREA OF INTEREST ON THE COUNTY INDEX MAP AND NOTE THE MUNICIPALITY NAME (TOWNSHIP OR VILLAGE).
 2. REFER TO THE TABLE OF CONTENTS AND NOTE THE BEGINNING ATLAS PAGE NUMBER FOR THE MUNICIPALITY OF INTEREST.
 3. TURN TO THE PAGE INDICATED, ON THIS PAGE WILL APPEAR AN INDEX MAP FOR THAT MUNICIPALITY.
 4. LOCATE THE GENERAL AREA OF INTEREST AND NOTE THE MAP PAGE NUMBER. THIS MAY BE EITHER A LETTER OR A NUMBER.
 5. MAP PAGES ARE IN ALPHABETICAL (OR NUMERICAL) SEQUENCE FOLLOWING THE MUNICIPALITY INDEX MAP. FOLLOW SEQUENCE TO THE MAP PAGE INDICATED.
 6. LOCATE SPECIFIC PARCEL OF INTEREST AND NOTE THE DESIRED INFORMATION.
- NOTE: ON SOME MAPS YOU MAY BE REFERRED TO A DETAIL SHEET SHOWING AN ENLARGEMENT OF THE AREA. THESE MAPS ARE FOUND AT THE END OF THE REGULAR MAP PAGES IN EACH MUNICIPALITY IN EITHER ALPHABETICAL OR NUMERICAL SEQUENCE.
- NOTE: CHARDON VILLAGE HAS TITLE SHEETS. TO LOCATE OWNERS NAME, NOTE THE PARCEL NUMBER, REFER TO THE TITLE PAGE FOLLOWING THE MAP OF INTEREST, FOLLOW NUMERICAL SEQUENCE TO THE PARCEL NUMBER OF INTEREST AND NOTE THE DESIRED INFORMATION. IN ALL OTHER MUNICIPALITIES THE OWNERS NAME APPEARS ON THE MAP PAGE.